



# St Jude's Church of England Junior School

Learning and Achieving Together with God



*\* Teachers challenge pupils to make links between their previous learning and their current work. Consequently, pupils develop their knowledge, skills and understanding. Pupils discuss their work enthusiastically and confidently.*



# | Contents

5 .....	Welcome
6 .....	About our School
7 .....	Vision and Values
9 .....	The Curriculum
15.....	Results
16.....	Homework
17.....	Activities
19.....	Collective Worship
20.....	Behaviour
21.....	The School Day
22.....	Pastoral Care
23.....	Transport
24.....	Uniform
25.....	Staff
26.....	Governors
27 .....	Partnership With Parents
28.....	Joining St Jude's
29.....	Moving On







*\* The headteacher has worked with great rigour and determination to make improvements at the school. She has high expectations for what staff and pupils at the school can achieve. Together with her talented leadership team, she has created a culture of ambition for all at the school.*



# 5

---

## I Welcome to St Jude's

When visiting St Jude's, people quickly notice what a caring school it is. This is one of the many aspects of our school of which I am immensely proud. We aim to encourage every child to understand their uniqueness and to realise that, with commitment and hard work, they have enormous potential.

We strive to ensure that the results we achieve are a true reflection of the children's capabilities and that they feel prepared to move on to the next stage of their education confidently.

We are always looking for ways in which to enrich our curriculum and to offer opportunities to prepare children for later life. We have resident chickens, rabbits and guinea pigs, as well as allotments and a wildlife garden. We have won the Runnymede in Bloom school garden competition for the past three years, thanks to our gardening club, after which we went to the local council offices to visit the mayor and receive our prize. Music is a constant feature in our curriculum and we are delighted that we now have a brand new music room in which we can teach drumming, piano, guitar and cornet lessons (to the whole of Year 5!) In the same new block is a kitchen in which we will be hosting cookery clubs and workshops.

In response to the current COVID-19 related circumstances, we have implemented an effective remote learning policy using Microsoft Teams, which provides a balance of live teaching and independent learning.

I hope that this prospectus gives you a taste of our school and that it encourages you to come and visit. We would be very happy to show you around.

Yours sincerely,

**Vicki Chiverton**

Headteacher



The school was started in 1827 by a group of local people, on its original site on St Jude's Road. Among the subscribers was King George IV and at this time parents were asked to pay 1d per week for each child. New buildings were erected on the same site in 1868, designed by Edward Buckton Lamb, who was also responsible for St Jude's Church.

In 1967, the school moved to its present site in Bagshot Road. During its history the school has been a 'through school' when children stayed at St Jude's until they were 14 years old; a Primary School for children aged 5-11 years; a Junior School for children aged 7-11 years and, in September 1976, it was re-organised into a Middle School, educating children between the ages of 8 and 12 years, before returning to its Junior School status in September 1993.

St Jude's is a 2-form entry Voluntary Aided junior school; it represents a partnership between the Surrey Education Authority and the Diocese of Guildford, and representatives of both are on the Governing Body. The school has very good links with the Church and has a strong Christian ethos. As a Voluntary Aided school, our capital funding is provided by the Diocese, not by the Local Authority. When undertaking any building work which uses this

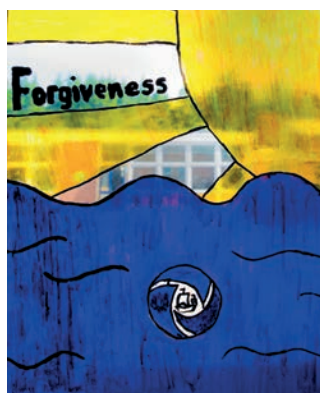
funding, the school is required to contribute 10% towards the costs. This money is not included in our budget and has to be provided by the Governors. Therefore, like all other church schools, we ask parents for a small, voluntary termly donation.

We traditionally take children from the village of Englefield Green and from other surrounding parishes, particularly Virginia Water and Egham, creating an environment where children from a range of infant schools come together in a happy, purposeful learning atmosphere.

Everyone at St Jude's is immensely proud of our school. It was rated "Good" by OFSTED in January 2019 and by SIAMS (Statutory Inspection of Anglican and Methodist Schools) following their Inspector's visit in July 2017.

*\* Adults provide good role models for the pupils, who in turn, show positive attitudes and responsibility in their learning.*

# Vision and Values



St Jude's aims to inspire all pupils to become confident, resilient young people who enjoy learning as a lifelong experience and who are empowered to make a positive contribution to society based on embedded Christian values.



Our school logo includes the three purposes of learning, responsibility and happiness.



Our school values can be found on a beautiful banner in the school hall and on the windows in the Year 5 corridor, as a reminder of the values that we teach the children to live by. Our Christian assemblies visit these values and are implicit in our behaviour towards each other, whether adult or child, as we live our daily lives.



*The values we hold are.....  
Forgiveness, Thankfulness, Love,  
Trust, Respect and  
Friendship.*





*\* Pupils at the school are knowledgeable about current national issues. They told inspectors they had discussed Brexit in assembly and used their research of news coverage to debate their own ideas. Pupils have good opportunities to take on leadership responsibilities. For example, they can become members of the school council, help organise the ‘eco-council’ or join the prayer committee. They proudly take up roles as monitors to help in school. One pupil reported, ‘We help our teachers run our school.’*



## | *The Curriculum*

St Jude's is a caring school, with a team of dedicated professionals who ensure that the children get the most from their education. Every member of staff is committed to providing the children with a happy, well-disciplined environment where all children can make the most of every learning opportunity offered to them.

The whole school curriculum is carefully planned to challenge all children and to give continuity and progression through their time at St Jude's. Building upon previous successful experience, children become more confident and independent in their learning.

The school has mixed ability classes in all four age groups. We currently employ 11 Teaching Assistants who are allocated to classes according to the needs of the children.



## | *Special Needs*

The Governing Body's policy on children with Special Educational Needs ensures that individuals' needs are quickly identified and steps are taken to meet them. No child will be refused admission to St Jude's on the basis of Special Educational Needs, disability or medical needs.

Children with learning difficulties are supported by the class teacher, who differentiates the tasks to the ability of the child. Children receive additional help from Teaching Assistants and some children may also be supported by our Special Educational Needs and Disability Co-ordinator (SENDCo), Mrs Emily Stanton.

Liaison with parents is essential in building a picture of a child's needs and the strategies for ensuring that he or she is able to make the best progress possible. St Jude's School also has many years of experience at teaching the more able child and provision for them is firmly embedded in the day-to-day lessons taught. This is also supplemented by projects with Royal Holloway University and our local confederation of schools.

### | *English*

Each class has at least an hour a day of English, which involves the teaching of reading, writing, spelling and grammar skills. This is then reinforced through other subjects of the curriculum so that important links are made between all areas of their learning. It is our aim that every child should leave St Jude's being able to communicate clearly both in writing and orally, as these skills are essential throughout life.



### | *Maths*

We provide a structured daily mathematics lesson for all pupils during which they are grouped according to their ability and progress. Oral and mental work feature strongly in each lesson, along with whole class teaching, group and individual work. In keeping with the National Curriculum, we ensure that the skills taught are reinforced laterally, rather than upwards, thus strengthening children's ability to reason, solve problems and to apply their skills and knowledge to new situations. We take the opportunity to relate their Maths to real life situations and this may include visits out where appropriate.

It is vital that children's mental arithmetic is sound so we ask that parents support the learning of multiplication tables and mental calculations in order to speed up their maths agility, especially given the introduction by the Department for Education of a statutory multiplication test from 2021 for all pupils at the end of Year 4.

*\* Curriculum leaders are enthusiastic and have good subject knowledge. The curriculum is carefully planned. It is broad and balanced and is clear in its purpose and intent.*



## | *The Curriculum*

### | *Science*

Science is an important part of a child's understanding of the world. It is a weekly feature on the timetable and encompasses both investigative and factual elements gained by practical and theoretical lessons. Our garden and animals encourage stimulating outdoor learning and give the children a sense of ownership and responsibility. We also have an Eco-Council which seeks to highlight issues that we, as citizens of a wider world, need to consider in order to develop an environment that we would like to live in.

### | *Computing*

The national Computing curriculum includes opportunities for learning how to write programs for computers. Our school is very well equipped with brand new computers, laptops, iPads and interactive whiteboards. All children need to have experience of working with computers, especially in word processing, problem solving, data handling and control technology. We are committed to providing all children with that experience.



### | *Creative Curriculum*

*The following subjects are linked together through a termly Creative Curriculum topic: History, Geography, Art and Design Technology.*

### | *Religious Education*

As a Church of England School, the teaching of R.E. is based on the Guildford Diocesan Syllabus Guidelines for Religious Education. Although we are a Christian school, we feel it is vital that children also learn about global religions so that they understand how beliefs and values of others help to shape the world. Parents have the right to withdraw their child from the teaching of R.E., but at present no parent exercises this right.

### | *History*

The aim of our History curriculum is that children will begin to see how the events of the past have shaped the world we live in today, through struggles for power, industrial changes and the impact of the monarchy. The topics include the Iron Age, Invaders and Settlers, Ancient Civilisations and the Battle of Britain. It is usual for a class to have a day visit to a place of interest relating to the topic they are learning about.





### | *Geography*

This is the opportunity to foster an understanding of the wider world, both in terms of Britain's place within it and of the differences in climate and culture overseas. We complete a local study, which overlaps with the Magna Carta in history, as well as topics including Antarctica, South America and a European study.

### | *Art and Design Technology*

Art fosters children's creativity and includes the acquisition of skills, artistic interpretation and studying the work of famous artists. Children work to improve their artistic and observational skills and have the opportunity to experiment with different media, e.g. paint, collage, sketching, printing and clay.

When designing and building products, the children are encouraged to make items that are of use to them and can function properly. This might be linked with motion in science and provides great opportunities for racing and flying or even eating. We are looking forward to sampling the culinary delights which the children will create in our brand new kitchen.

### | *Music*

Music plays an important part in the life of St Jude's. It is an essential part of our daily assembly where opportunities for listening and performing are offered. We have a school choir and brass band. Following the brass tuition, given free of charge to Year 5 pupils, many become so accomplished that they have become members of Egham Youth Band, which was created by Egham (Brass) Band specifically to foster emerging talent.

Surrey County Arts peripatetic music teachers visit the school to instruct children in a wide variety of instruments including piano, brass, violin, cello and classical guitar. We have our own rock guitar and drumming teachers. Parents can apply for tuition via the school office for which a termly fee applies. Music lessons take place in our brand new music room.

The school's Year 6 pupils take part in an end-of-term production in July. In the spring, we also invite parents to attend our St Jude's has Talent evening, where budding performers are able to showcase their talents.

## | *The Curriculum*

### | *Modern Foreign Languages*

Since learning a language became statutory at KS2, we have been teaching French across the school. This includes the ability to converse in simple terms through learning songs and key phrases. Each year we have a World Week, when the children learn a little about the culture and food of another country.



### | *Physical Education*

All children will participate in a variety of activities at St Jude's. Some of the activities concentrate on specific physical skills whilst others may focus upon controlled body movement (as in dance) or team sports (such as football, netball, rugby, cricket and rounders). Games lessons are taught by specialist sports coaches from the company PS Coaching.

The aim of the school's P.E. programme is to give all children experience of a variety of sports and activities whilst encouraging enjoyment in such activity and fostering excellence.



Swimming is an important part of our Physical Education programme. We have a heated, open-air pool which is used during the summer months. All children are given the opportunity to learn how to swim. We ask for voluntary contributions for swimming, which we use for the upkeep of the pool and for professional swimming instructors.

### | *Personal, Social and Health Education*

P.S.H.E. is taught as a subject in its own right, via a scheme called Jigsaw. Pupils will be given the knowledge, skills and understanding to become informed, active and responsible citizens. This is also the chance for them to discuss issues that are of concern to them as they mature and how to deal with conflict and uncertainty in their lives. Our therapy dog, Larry, visits a couple of times a week to support the children in developing the resilience to manage their feelings and lead confident, happy lives.



### | *Relationships and Sex Education*

These lessons are set in the context of caring family relationships, health and hygiene and we make it our policy to answer children's questions as honestly and as sensitively as we can. Parents are invited to an evening meeting when they will be able to view the videos we use in the children's lessons. They will therefore be prepared for any questions their children may ask. If you do not wish your child to be included in the Sex Education element of the school's programme, please inform the Headteacher in writing.

*\* Pupils' personal development and welfare are outstanding.  
Pupils embrace fully the school's values. They are highly considerate of all members of their school community.*



# Results

## | Key Stage 2 National Assessment results

All pupils undertake statutory assessments at the end of Year 6 at which they are expected to attain a National Standard. As the national lockdown (relating to COVID-19) prohibited any national assessments in 2020, below are the results for 2019.

Reading, Maths and GPS\* are assessed by means of a test, which is externally marked. Writing is assessed within school by teachers against a statutory framework, based on the performance of the pupil over time in a variety of contexts. Science is also assessed by teachers.

The table below shows the percentage of pupils that attained the National Standard and those who were assessed as working significantly higher than National Standard, as well as our average progress score and average scaled scores.

66 pupils	School (Pupils attaining National Standard)	National (Pupils attaining National Standard)	Average progress (National measure is 0)	School Average scaled score	National Average scaled score
National Standard in <b>Reading</b>	72%	73%	-0.19	105	104
Higher in <b>Reading</b>	37%	27%			
National Standard in <b>Maths</b>	85%	79%	+0.13	107	105
Higher in <b>Maths</b>	32%	27%			
National Standard in <b>Writing</b>	80%	78%	-0.42		
Higher in <b>Writing</b>	17%	20%			
National Standard in <b>GPS*</b>	79%	78%		107	106
Higher in <b>GPS*</b>	49%	36%			

\*GPS - Grammar, Punctuation and Spelling

For further details about national results and the DfE's analysis of them, please see document 5 September 2019, National Curriculum assessments: Key Stage 2, 2019 (provisional) from the DfE website.

Homework is an integral part of the curriculum for all children; it fosters independence and good study habits, which will be essential when children begin their secondary school career.

The children receive a formal timetable which will be sent home to parents. We ask for your support to help your child organise his/her homework around the other activities they enjoy. The time spent on homework will vary but it shouldn't take more than  $\frac{1}{2}$  an hour per task in Years 3 and 4 and up to an hour for Years 5 and 6. Should parents find that their child is having difficulty with their homework, then we ask that you make contact with the class teacher.

Every child will be given a planner at the beginning of the year in which they record their reading and maths activities. We subscribe to Mathletics, which is an online maths resource and forms part of the weekly homework as well as offering additional maths games.

### | *Homework may include:*

- Reading
- Learning spellings and multiplication tables
- Mathematics
- English
- Building a model
- Preparing a presentation
- Revision for KS2 Assessments (Year 6)



*\* The curriculum is broad and balanced. Exciting opportunities such as trips, visits and workshops are built into the curriculum.*

# | Activities

## | School Visits & Visitors



Visits out of school enrich our curriculum. Last year children from St Jude's visited the Natural History Museum, the RAF Museum London, Guildford Cathedral, Morden Mosque, Haslemere Educational Museum and London Zoo.

We offer a three-day PGL residential trip for Year 5 to High Ashurst near Dorking and a week long visit to Somerset for our Year 6 pupils. The children also

make various local visits, studying the environment and the churches in the village.

We wish to provide the children with as many creative experiences as possible and enjoy welcoming visitors to the school to make their learning fun and interesting. Recent visitors have included Roman and Stone Age themed history groups, our annual pantomime and even the former world champion athlete, Colin Jackson, shown above. The children also took part in a quiz with other local schools, which St Jude's won.

We are fortunate to have good links with the Police, who come into school to work with our children on internet and personal safety. Year 5 children are able to participate in "Bikeability" training as well as Year 6 in the Junior Citizen scheme organised by Runnymede Council.

The school's Governors have established a policy for charging for school activities. A copy is available on request.

## | Clubs & Out of School Activities

The teaching staff usually run weekly school clubs, although these are currently suspended as a result of the COVID-19 circumstances. These may vary throughout the year according to the season and the number of children wishing to take part. In addition, there are a number of clubs at the school which are operated by outside agencies. The children have had the opportunity to participate in Arts & Craft, Brass Band, Choir, Computers, Cooking, Cricket, Dance, Dodgeball, Drama, Football, Gardening, Music, Netball, Spanish, Tennis and Ukelele. We take part in inter-school sport on a regular basis with events including athletics, cross-country, football, netball and tag rugby.

## | The Gap Club

After school childcare provision is offered by the Gap Club which also operates a club at Englefield Green Infant School for younger children. It provides a secure, on-site, after school childcare facility run by experienced and professional staff. The Gap Club also provides a breakfast club which opens at 7.30a.m. Leaflets giving more information are available from school.





\* *"Learning through music  
and science are  
strengths."*



## I Collective Worship

Being a Christian school is an important part of our identity, so we learn together how to follow the values that the school upholds. We also believe it is important to allow the children to express their beliefs, whether they may be Christian, of another faith or of no faith.

This enables them to form their own views, based on carefully thought out opinions. Collective worship takes place every day at St Jude's; the children and staff gather together in the hall as a whole school family or in their year group. Collective worship is led by the Headteacher, Deputy Head, a member of the teaching staff or by the Vicar or other guest speakers.

Parents have the right to withdraw their child from the act of worship but at present no parent exercises this right.

Every class leads an assembly once a year and parents of those pupils are warmly invited to attend. These are currently suspended as a result of COVID-19 regulations, but we aim to reintroduce them as soon as we are able to.





The aim of the school's policy is to promote good behaviour and we believe that all people associated with the life of the school have a part to play. Good behaviour stems from self-discipline, developed through self-confidence and high self-esteem. Respect for each other and for property is the basis for a successful and fulfilling role within society. Our behaviour code promotes the idea of making the right choice.



*| The rules at St Jude's tie in with our school values.*

- Love - We will show love to everyone in our school and in the world around us.
- Forgiveness - We will show forgiveness through our words and actions.
- Friendship - We will treat others as we would like to be treated.
- Thankfulness - We will be thankful for our school and ensure that we take the opportunities it offers us.
- Respect - We will treat other people and their property with respect.
- Trust - We will trust the people around us and show that we can be trusted.

In each classroom and in every child's planner is our Behaviour Code, in which expectations are clearly explained along with the associated reward or sanction. We strongly believe in encouraging pupils to 'make the right choice' thus enabling them to correct themselves. However, should a child's continued inappropriate behaviour be a cause for concern, parents will be consulted and, where necessary, a specialist Behaviour Support Teacher from Surrey County Council may become involved. The intention of such a procedure is to help the children improve their behaviour with closer monitoring of their general attitude to staff, their work and their peers.

*\* Pupils are well behaved. They are courteous towards others, respectful of others and show consideration for each other. Pupils play with friends from other year groups at breaktimes and lunchtimes. Incidents of bullying are rare. Where concerns are raised these are dealt with immediately.*





## | *The School Day*

### | *Attendance*

We are committed to promoting school attendance by providing an environment and ethos where children feel safe and can build positive relationships with their peers. We expect in return that parents ensure their child attends school regularly and punctually. Holidays in term time are not authorised. If a parent wishes to take their child out of school for exceptional reasons, they must seek permission from the Headteacher and careful consideration will be given to any such request, taking the child's attendance records into account. Punctuality is essential, as lateness can cause embarrassment for the children and will mean that they miss vital minutes of their learning time.

### | *The Morning*

We are currently operating a staggered drop-off and pick-up system for each year group, from 8.35am to 8.50am. If a child is unwell and unable to attend school, we ask parents to advise us via the Studybug app or telephone the Office before 9.30am to let us know. Registers are checked each day for non-attendance and a telephone call is made to those parents whose children have not arrived in school by that time.

There is a morning break of 20 minutes, at which children may bring a piece of fruit or a cereal bar from home to eat.

Sweets and chocolate are not allowed. They may also bring water to drink during the school day which they keep in a named bottle in their classroom.

### | *Lunchtime*

Lunchtime currently lasts for 70 minutes, during which time the children will eat, play and perhaps attend a club for their year group. Children may choose to bring a packed lunch to school or to eat the cooked meals provided by Surrey Commercial Services, at a cost of £2.40 per day. We ask that school meals are paid for in advance. All meals are taken in the school hall except during the summer, when packed lunches may be eaten at tables in the school grounds if the weather is good or on our double-decker bus. The kitchen also provides packed lunches during the summer.

### | *At The End Of The Day*

School finishes between 3.05pm and 3.20pm at which point the children will be released from their classroom via their fire exit door onto the playground.





Should any member of staff be concerned about a child's education or wellbeing they will consult parents initially to arrange an appointment to discuss the problem, so that together a decision can be made about whether that child would benefit from further support. Similarly, we ask that parents contact the school to discuss any issues they may have regarding their child's life at St Jude's, so that these can be resolved quickly.

### | *Keeping Our Children Safe*

St Jude's prides itself on being an 'open' school but we must balance this with being a 'safe' school. All entrances to the school buildings are fitted with security code panels. Visitors, including parents, must call at the School Office where they must sign the Visitors' Book and will be given a Visitor Badge so that everyone knows that the person is a welcome guest of the school. The Governors ensure that all employees have been DBS checked and we expect volunteers who work in school on a regular basis, and those running clubs, to undergo these checks too.

### | *Spiritual, Moral, Social & Cultural Development*

We believe that this is a very important part of a child's development and is implicit in much of the work we do at St Jude's. Moral development is encouraged by example and discussion. Spiritual development is often illustrated through R.E. and P.S.H.E. lessons. Social development is encouraged through all classroom interaction. We believe in celebrating all of the cultures represented within our school, as well as those of others around the world. As a church school, all moral, spiritual, social and cultural development is an integral part of the school assembly and of the school's whole ethos.

## | *Transport*



St Jude's is an eco-friendly school and encourages the children to care for the environment. Our Eco-Council has won a bronze award with Eco Schools and is working on gaining silver. We have solar panels on the roof and we promote alternative methods of travelling to and from school, for example cycling or walking.

### | *Our Bus*

In December 2015 we took delivery of a beautiful, red, double-decker bus. It serves as an exciting location for our library, as well as providing an additional lunch space in the style of an American diner.



### | *Cycling*

We have a permanent covered cycle storage area within the school grounds and children are permitted to cycle to and from school, provided they are accompanied by an adult and wear a cycle helmet. Children in Year 5 have the opportunity to take part in Surrey County Council's Bikeability training scheme in the summer term. Only on successful completion of this training would we suggest children cycle to school unaccompanied, although this is ultimately parents' responsibility.

We expect all our children to wear the school uniform wherever possible; it engenders a sense of belonging and pride in the school. Our uniform supplier is Janet's Dancewear, Schoolwear & Fashions, 82 St Jude's Road, Englefield Green. We also keep a small amount of second-hand uniform in school.

Children are allowed to wear trainers at lunchtime to play games on the field or playground but we ask them to change back into school shoes before the afternoon session. One stud earring in each lower lobe may be worn, but for safety reasons must be removed for P.E. and swimming. Surrey's policy is that earrings may not be taped over, even if ears have only just been pierced. Therefore, to avoid missing six weeks of P.E. lessons, we recommend that ears are pierced at the beginning of the summer holidays. No further jewellery other than watches should be worn.

Navy blue skirt or charcoal grey trousers  
Navy blue tights or white socks with skirts  
Grey socks with trousers  
White shirt  
St Jude's navy blue cardigan or jumper  
Gold school tie  
Navy blue/white gingham summer dress  
Black flat shoes

**For P.E. and Games:**

Navy blue polo shirt with school logo  
Navy blue shorts  
Navy blue tracksuit  
Trainers  
A drawstring bag to keep kit in  
A swimming costume, hat and towel will be needed in the summer term



*All uniform must be clearly marked with your child's name.*





## | School Staff

### HEADTEACHER

Mrs V. Chiverton

### DEPUTY HEADS

Mrs P. Ashplant  
Mrs E. Stanton (SENDCo)

### TEACHING STAFF

#### YEAR 3 (2 classes)

Mrs S. Womack  
Mrs H. Young

#### YEAR 4 (2 classes)

Mrs K. Brant (maternity leave)  
Mrs E. Drew, Mrs S. Culpin  
Mrs E. Johnson

#### YEAR 5 (2 classes)

Miss Ayara-Ekpe, Mrs B. Salter  
Mrs M. Kaila

#### YEAR 6 (3 classes)

Mrs J. Austin  
Mrs D. Barnett, Miss R. Martin  
Miss A. Moxon

### OFFICE STAFF:

School Business Manager  
Admin Support

Mrs C. Edney  
Mrs K.Hall, Mrs S. Kavanagh, Mrs S. Lee

### TEACHING ASSISTANTS:

Mrs V. Barbet  
Mrs J. Beer (HLTA)  
Mrs H. Carter  
Mrs N. Kavia  
Mrs H. King (HLTA)  
Mrs C. Mundell  
Mrs L. Simpson  
Mrs S. Snow (ELSA)  
Mrs M. Tickle  
Mrs T. Trend  
Mrs A. Wilkinson

### CARETAKER:

Mr M. Gregory

### LUNCH TIME SUPERVISORS:

Mrs S. Rayner,  
Mrs V. Barbet, Mrs G. Dapkuniene  
Mrs G. McEwan, Miss E. Priddis,  
Mrs J. Sines, Mrs D. Underwood,  
Mrs J. Waite, Miss R. Williams



Our school represents a partnership between Surrey County Council and the Diocese of Guildford; with the composition of the Governing Body reflecting this. The Governors meet twice per term and have general oversight of the school. They work with the staff and are critical friends of the school leadership, challenging and supporting where appropriate. The Governors approve all policies before they are put into action. All policy documents are available in the School Office should any parent wish to read them.

The Chair of the Governors can always be contacted through the school.

The Governors of St Jude's are:

#### **Foundation Governors**

Dr H. McKee  
Dr C. Pittol (Vice Chair)  
Mr J. Pemberton  
Dr J. Roe  
Mr S. Wilkinson

#### **Local Authority Governor**

Dr S. Patel  
Mr S. Barker (Vice Chair)

#### **Staff Governors**

Headteacher  
Deputy Head  
Deputy Head

Mrs V. Chiverton  
Mrs P. Ashplant  
Mrs E. Stanton

#### **Parent Governors**

Mr M. Shapter (Chairman)

#### **Associate Governors**

Mr D. Boorman  
Mr P. Ferguson

#### **Clerk to the Governors**

Mrs S. Kavanagh



## | *Partnership with Parents*

We believe in working in partnership with parents. All teachers readily make themselves available to parents to make their child's time at St Jude's as happy and productive as possible.

Sometimes, particularly in the first few weeks of a child's school career with us, simple enquiries can be dealt with in a matter of moments and can reassure the child and their parents. Class teachers are available immediately after school at the classroom door, but should parents require a more lengthy discussion with either the class teacher, Deputy Head or Headteacher, appointments can be made through the School Office.

At the beginning of the year, each child is given a planner in which they record their homework, spellings, reading and maths activities. This is also used as an informal means of communication between home and school.

Consultation meetings are held in the autumn term when parents are invited to come along to discuss their child's progress and individual development with his or her teacher. Similar meetings take place in March to discuss how children have progressed and which targets would be appropriate for them to reach by the end of the school year. Annual Reports are sent to children's parents at the end of the summer term.

Parents are welcome to be involved in the life of the school and are always invited to the various events throughout the year.

We hold 'sharing mornings' each term so that your child can show you what they have recently been working on. This might also include the chance to play some maths games with them or to share a book together.

We send home regular newsletters and special event letters. In return we ask that parents keep us up to date with important information such as any change of address, contact telephone numbers or the development of any medical condition or other issue which may affect their child's progress or behaviour.

## | *PTA*

The school has a thriving P.T.A. which works incredibly hard to raise extra funds for children's activities, including the annual Summer and Christmas Fairs and termly discos. They paid for our tyre park, P.E. wall bars, made a substantial contribution to the science garden and the double-decker bus, installed a new sound and light system in the hall, a long-jump pit on the field and funded our new computers. Any parent who would like to be involved on the Committee, or would like to help in any way, would be most welcome.



## | *Prospective Parents*

Prospective parents are invited to visit St Jude's in action – tours of the school and an Open Evening have been arranged for the autumn term. Parents who are unable to attend at that time are invited to make alternative arrangements by contacting the School Office.

The school will be open for parent tours on the following days:

■ 6th November: 9.30/10.00/10.30/11.00am

■ 30th November: 9.45/10.15/10.45/11.15am

Please call the school office to make an appointment and our Year 6 Team Captains will be delighted to show you around to give you a pupil's perspective on life at St Jude's. Mrs Chiverton will also be on hand to answer any questions you may have.

We are holding a virtual Open Evening on Wednesday **18th November at 6.30pm** via Microsoft Teams. If you would like to join, please call the school office and you will be sent the link.

## | *Admissions*

St Jude's provides a distinctly Christian yet inclusive environment in which each child is motivated to acquire skills for a happy life and a love of learning, and to foster a sense of responsibility for oneself and others. We ask all parents applying for a place here to respect this ethos and its importance to the whole school community.

The school has a Published Admissions number of 60. A full copy of our Admissions Policy, giving procedures, definitions of terms and explanatory notes, is available on the school website. Below is a summary.

In the event of more applications being received than there are places available, the Governors will bring into play the following admissions criteria in order of priority:

1. Looked After Children and previously Looked After Children (see Explanatory Note 2 of the full policy).
2. Children with serious medical or social conditions (see Explanatory Note 3 of the full policy).
3. Children who live in the village of Englefield Green (a map outlining the village boundary can be seen in the school office).
4. Siblings of children who are pupils or former pupils (see definitions of terms) of St Jude's School at the time of entry who are living as part of the family unit at the time of application.
5. Children of parents who are regularly worshipping Christians (see Explanatory Note 4 of the full policy) living in the parish of St Jude's or the neighbouring parishes of Egham, Virginia Water, Thorpe, Staines, Lyne and Longcross and Old Windsor and for whom the Supplementary Information Form has been completed by a church minister (see Explanatory Note 4).
6. Children attending Englefield Green Infant School or Christ Church C. of E. V.A. Infant School, Virginia Water.
7. Children whose parents wish them to attend this Church school.





## | *Moving On*

A Surrey County Council preference form must be completed online by 15th January 2021 for each child applying for a place in Year 3 at St Jude's.

To be considered for admission to St Jude's under criterion 5, it is mandatory that a completed Supplementary Information Form be completed and signed by the incumbent of their church. This form can be found on the school website and should be returned directly to St Jude's School by 15th January 2021 for the attention of Caroline Edney, Admissions Officer.

## | *New Entrants*

All those children who will be joining us in September 2021 will be invited to visit the school and to meet their teachers in June 2021. Parents will be invited to an induction meeting during the summer term prior to their child's transfer. During this visit, parents will be given the opportunity to look around the school once more and to ask questions of the Headteacher, Deputy Head and staff, either formally or informally.

Every effort is made to ensure the transition to St Jude's is as smooth as possible. Close links have been established with the infant schools to enable children to settle in as quickly as possible. We ask parents to let us know if there are special circumstances or difficulties with which your child might need support.

## | *Transfer to Secondary School*

On leaving St Jude's at age 11, children transfer to a wide variety of secondary schools either within Surrey or across the border in Berkshire, both within the state system and in the independent sector. As a member of the North Runnymede Learning Partnership, we are a named feeder school to The Magna Carta School which is where the majority of our pupils will go. Others may join Chertsey High School, Charters School, the grammar schools in Slough, Sir William Perkins's School and St George's School. At the beginning of a child's final year at St Jude's, parents will receive information from Surrey giving details of how to apply for your preferred school.





*\* The school's work to promote pupils' personal development and welfare is outstanding. A large majority of parents told inspectors that their children are happy and safe at school. They shared their appreciation of the support their children receive.*



*\* Physical education (PE) and sport are well led and taught by a highly skilled team. Staff review the curriculum to make sure it is both challenging and engaging. PE funding is used effectively and monitored carefully.*

The contents of this document represent the information required in Schedule 2 of the Education (School Information) Regulations 1981 and relate to the school year 2020-21. The information was correct as at September 2020. It should not be assumed that there will be no change affecting the arrangements described in this document, before the start of or during the school year in question or in relation to subsequent school years, especially in response to COVID-19 regulations.

**\* Ofsted January 2019 or SIAMS July 2017**

For our GDPR privacy policy, please see our school website

—Prospectus 2020/21—







Designed & produced initedesignltd.com

Bagshot Road, Englefield Green, Surrey TW20 0RU

☎ 01784 432180

✉ school@stjudes.surrey.sch.uk

🌐 stjudes.surrey.sch.uk

🐦 @StJudesHead